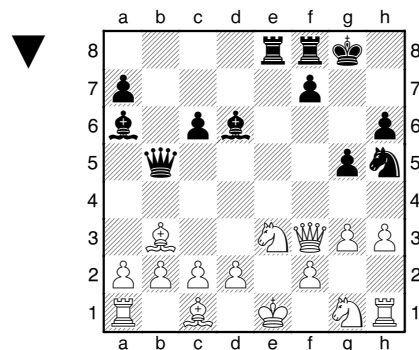


**Livello 1 (≥ ~1000 Elo)**

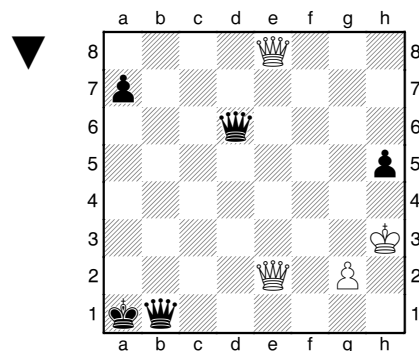
Conoscenza dell'uso delle regole del gioco

- 1. Lujic,S.- Baeta,M. N.**  
22nd WSCC Open Kamena Vourla 2012



**1...Df1# 0-1** Il Cavallo e3 non può catturare la Donna essendo inchiodato dalla Torre in e8.

- 2. Bianco Diaz,R. J. - Borwell,A. P.**  
22nd WSCC Open Kamena Vourla 2012

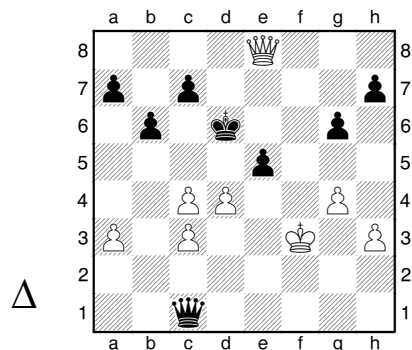


**1...Dh1# 0-1**

**Livello 2 (≥ ~1300 Elo)**

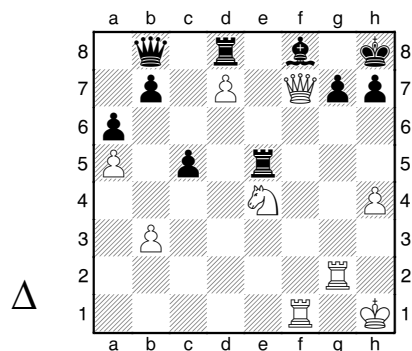
Conoscenza dell'uso di un motivo tattico

- 1. Kolbak,J.- Gamboa,A.**  
22nd WSCC Open Kamena Vourla 2012



**1.dxe5+!! 1-0**  
Dopo 1...Rc5 segue 2.Db5#.

- 2. Balashov,Y. S.- Barboza,M.**  
22nd WSCC Open Kamena Vourla 2012

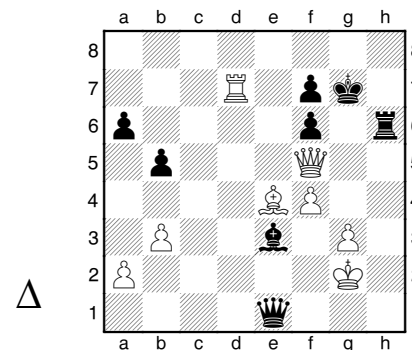


**1.Cf6!! 1-0 minaccia 2.Dg8#**  
Se 1...gxf6 segue 2.Dg8#  
Se 1...Ae7 o 1...Ad6 segue 2.Dxg7#

**Livello 3 (≥ ~1500 Elo)**

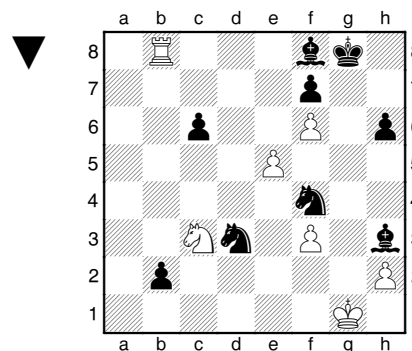
Conoscenza dell'uso di due motivi tattici/strategici

- 1. Vaisser,A.- Pritchett,C. W.**  
22nd WSCC Open Kamena Vourla 2012



**1.Dg4+!! 1-0**  
Se 1...Tg6 segue 2.Dxg6! Rf8 (2...Rh8 3.Td8#)  
3.Dxf7#.  
Se 1...Rf8 segue 2.Td8+ Re7 3.Dd7#

- 2. Finlay,I.- Krstic,S.**  
22nd WSCC Open Kamena Vourla 2012

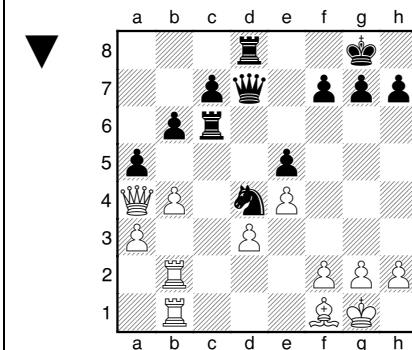


**1...b1D: 0-1** (buona anche 1...b1T)  
Se 2.Txb1 segue 2...Ac5+ 3.Rh1 Cf2#  
Se 2.Cxb1 segue 2...Ce2+ 3.Rh1 Cf2#

**Livello ≥ 4 (≥ ~1800 Elo)**

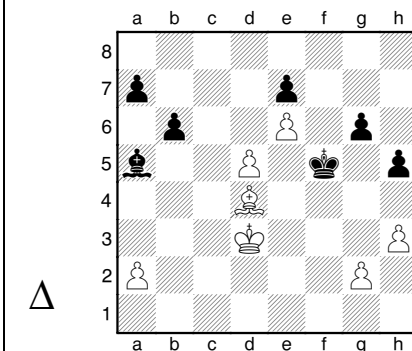
Conoscenze dell'uso di più motivi tattici/strategici con diverse varianti

- 1. Saunina,L.- Fatalibekova,E.**  
22nd WSCC Women Kamena Vourla 2012



**1...Cf3!! 2.Rh1 Th6!! 0-1** Il Nero minaccia matto o la cattura della Donna.  
Se 2.gxf3 segue 2...Tg6+! e poi 3...Dxa4.

- 2. Zakharchenko,A.- Benson,L.**  
22nd WSCC Open Kamena Vourla 2012



**1.g4+!! hxg4 2.hxg4 1-0** Il Re nero deve allontanarsi dal Pedone e6 e il Bianco riesce facilmente a promuovere uno dei Pedoni centrali.  
Per es. 2...Rxc4 3.d6! exd6 (3...Ab4 4.d7!+- o 3...b5 4.dxe7!+-) 4.e7+-.