

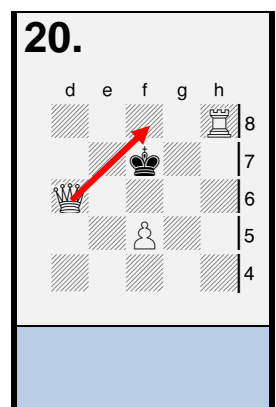
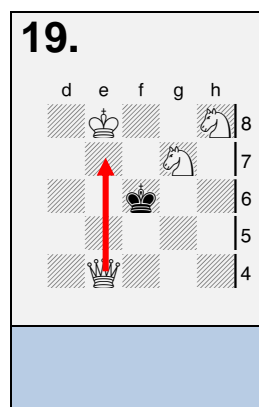
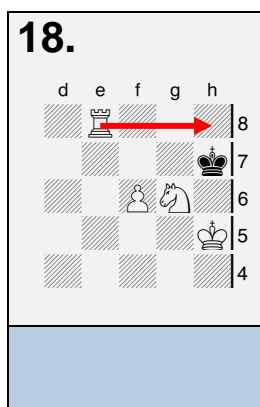
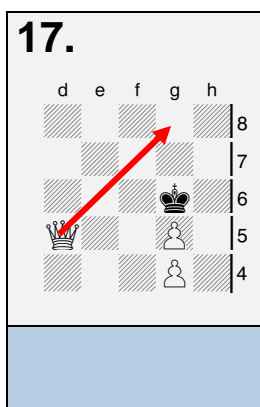
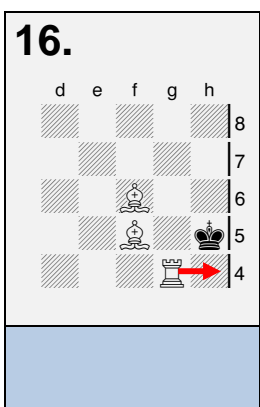
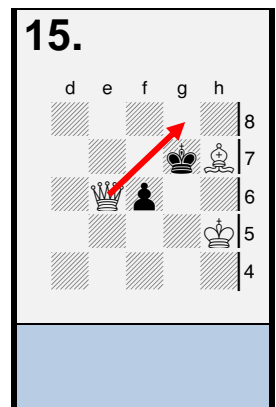
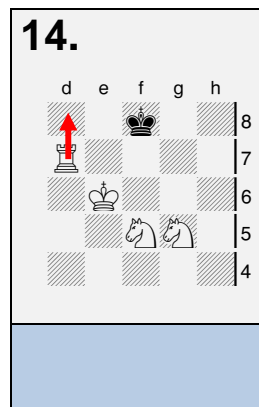
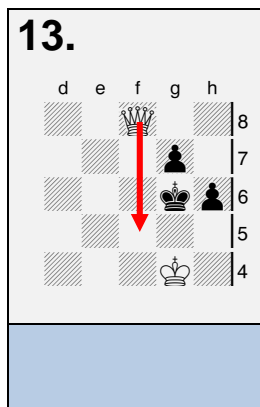
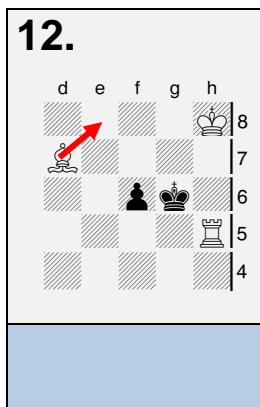
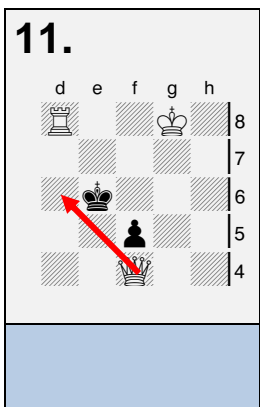
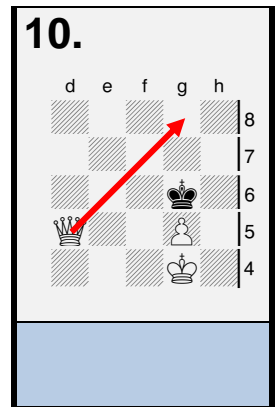
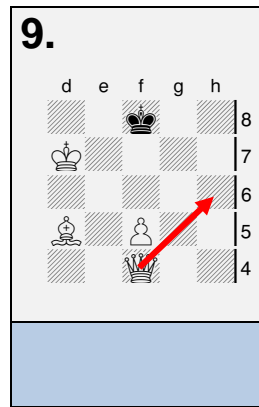
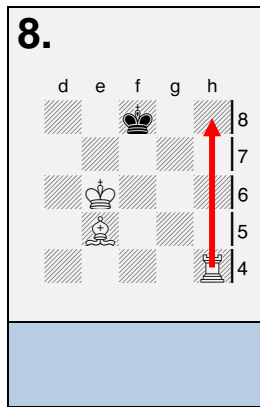
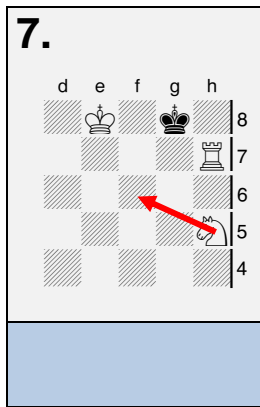
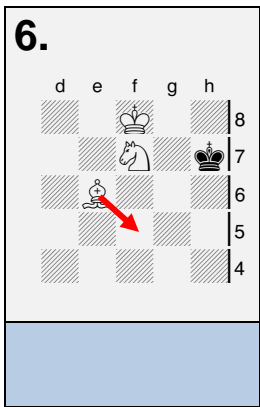
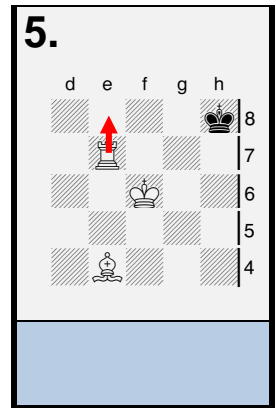
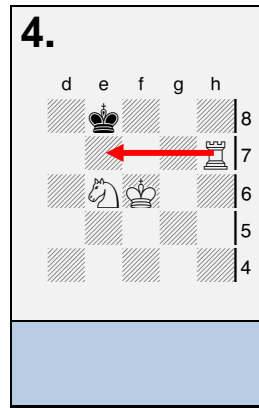
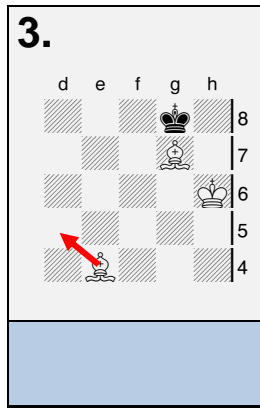
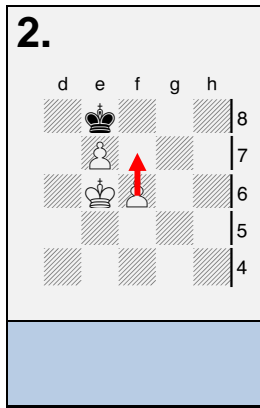
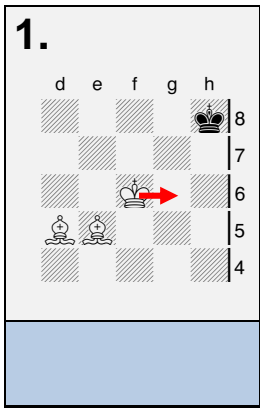
Prima di risolvere i problemi leggete attentamente le spiegazioni sulla prima pagina.

Ogni soluzione sbagliata o incompleta è valutata come un errore.

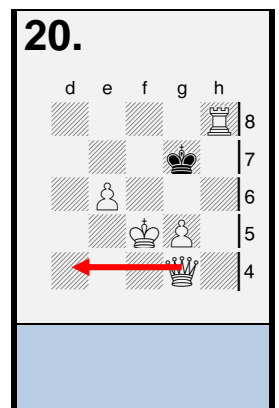
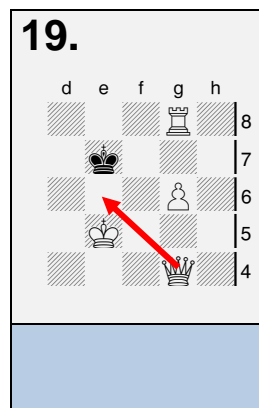
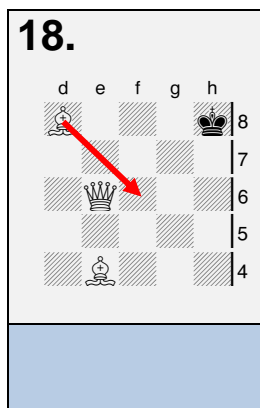
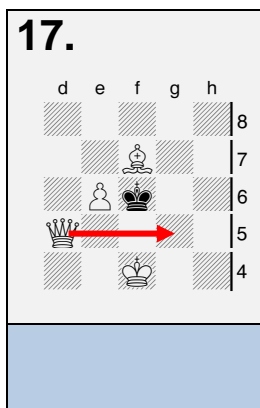
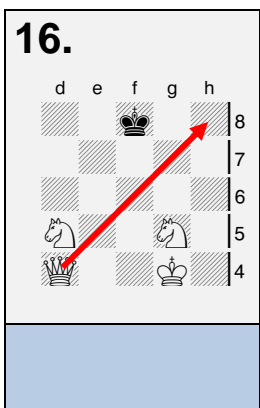
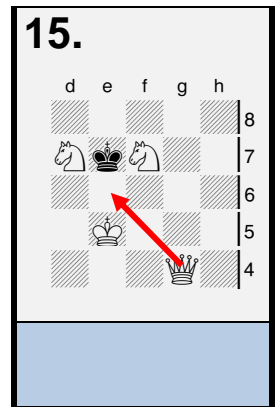
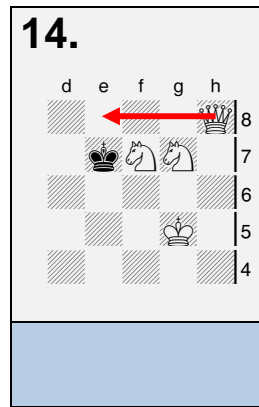
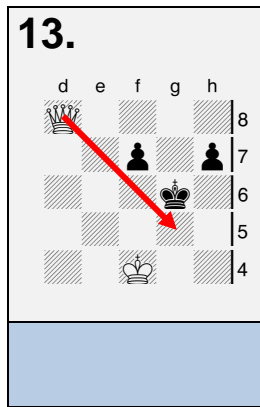
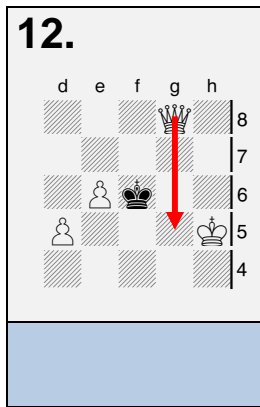
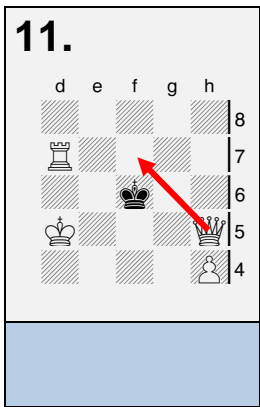
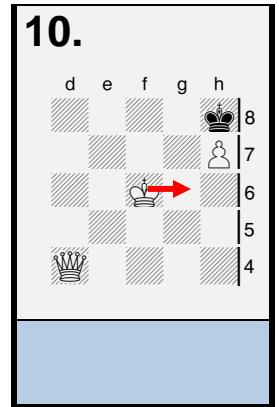
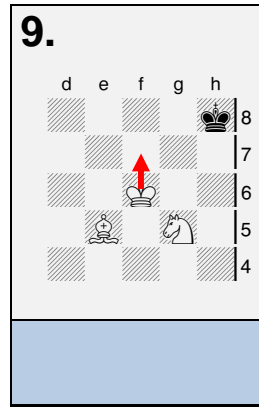
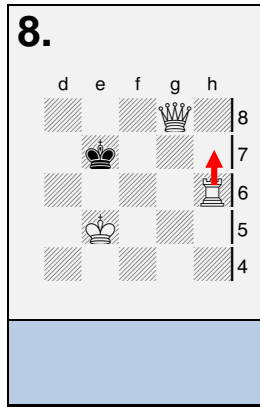
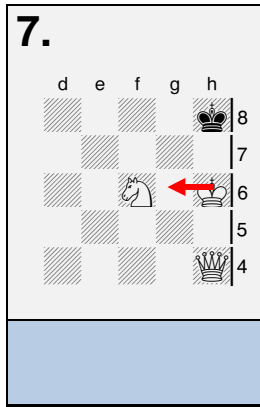
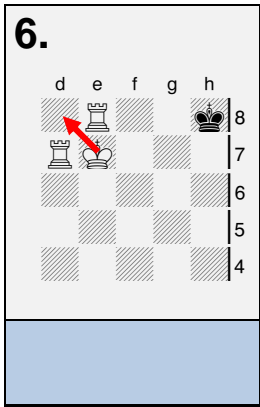
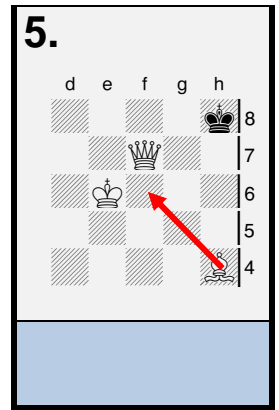
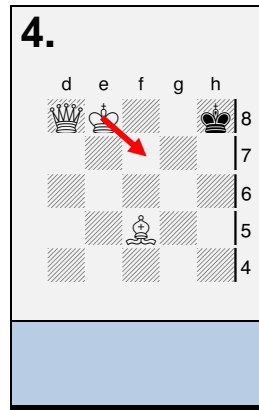
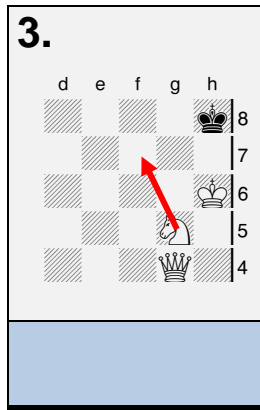
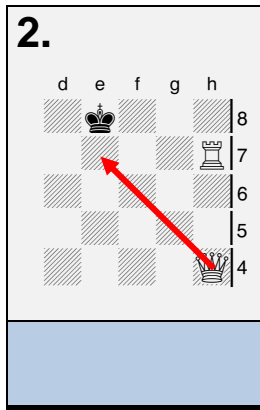
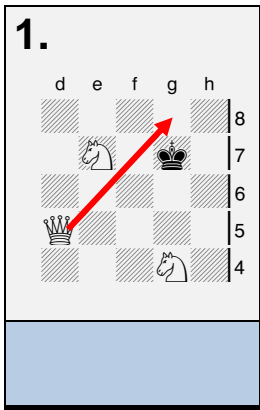
<p>1.</p>	<p>2.</p>	<p>3.</p>	<p>4.</p>	<p>5.</p>
<p>6.</p>	<p>7.</p>	<p>8.</p>	<p>9.</p>	<p>10.</p>
<p>11.</p>	<p>12.</p>	<p>13.</p>	<p>14.</p>	<p>15.</p>
<p>16.</p>	<p>17.</p>	<p>18.</p>	<p>19.</p>	<p>20.</p>

Prima di risolvere i problemi leggete attentamente le spiegazioni sulla prima pagina.

Ogni soluzione sbagliata o incompleta è valutata come un errore.

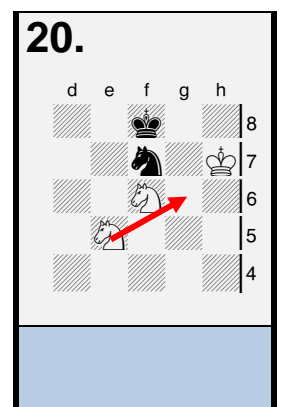
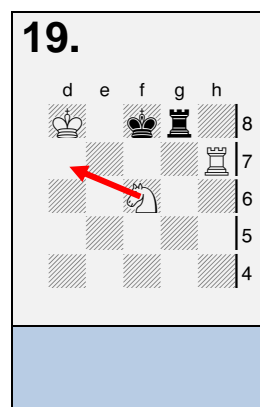
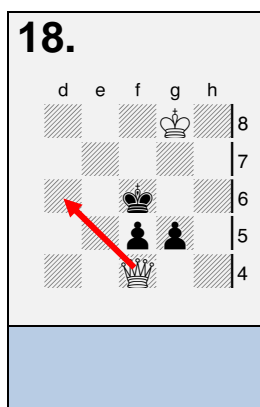
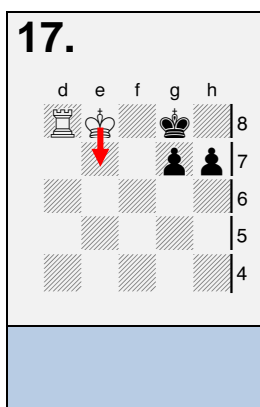
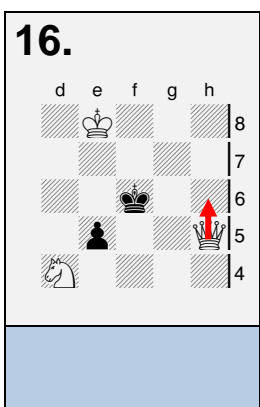
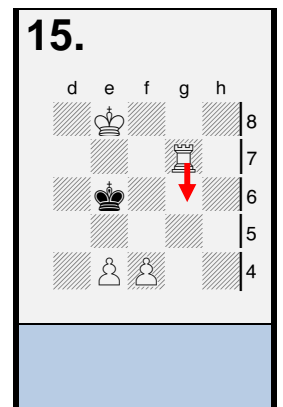
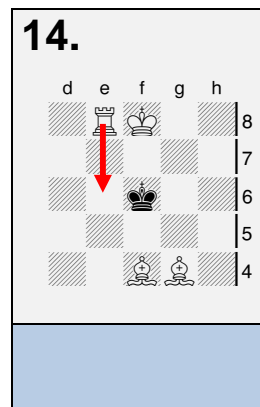
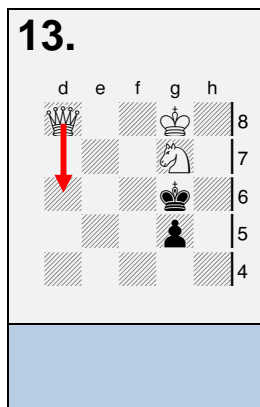
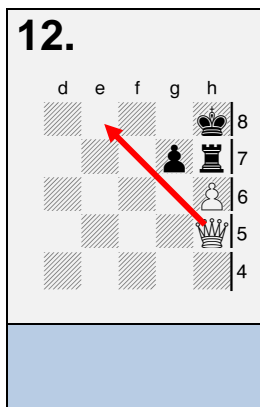
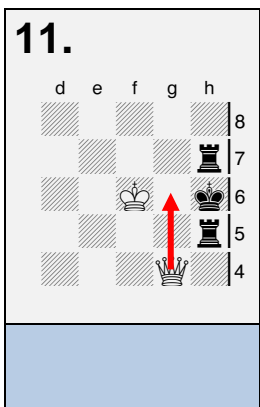
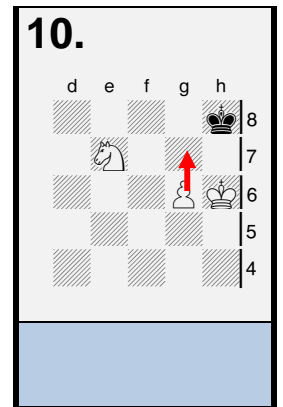
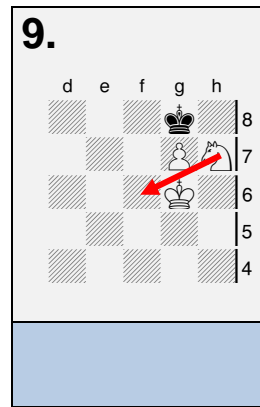
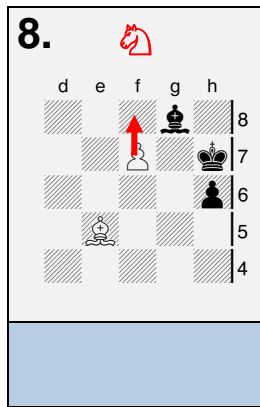
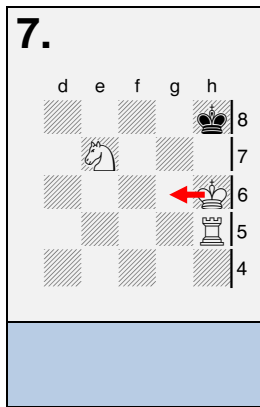
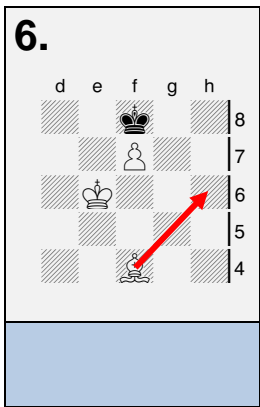
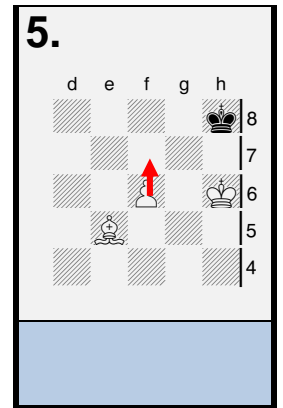
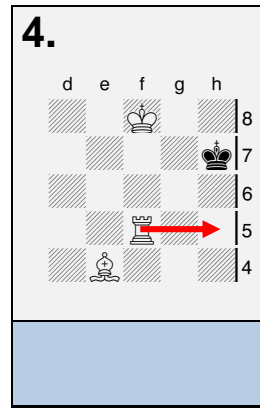
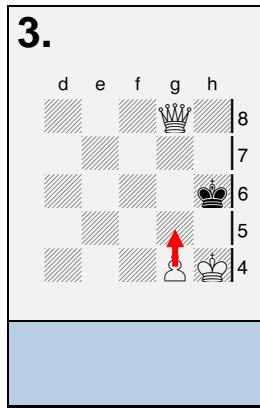
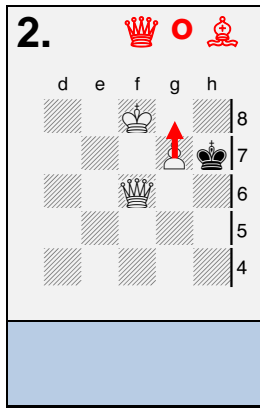
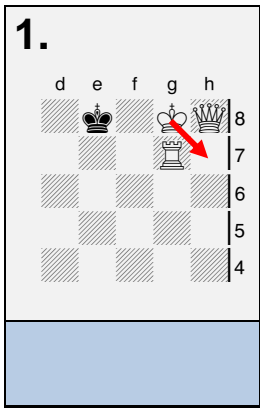


Prima di risolvere i problemi leggete attentamente le spiegazioni sulla prima pagina.
Ogni soluzione sbagliata o incompleta è valutata come un errore.



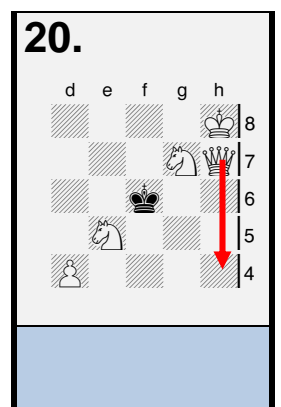
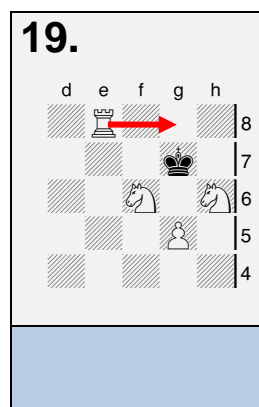
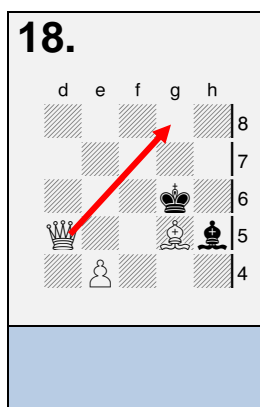
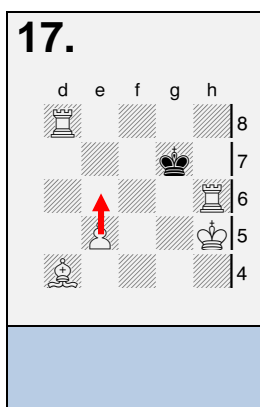
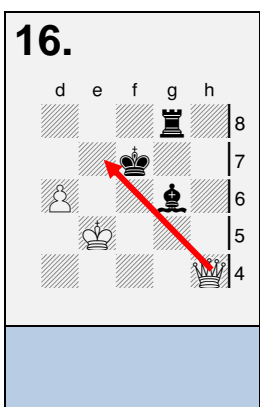
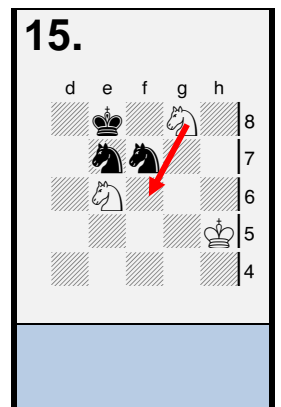
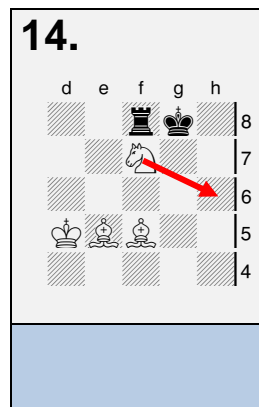
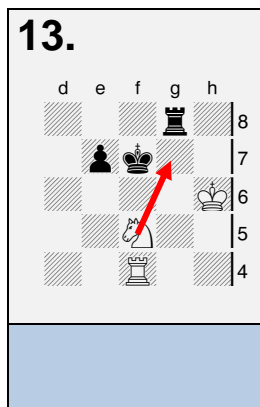
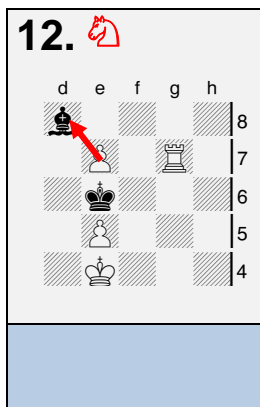
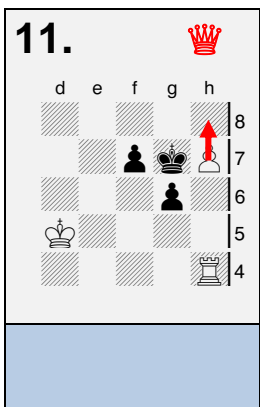
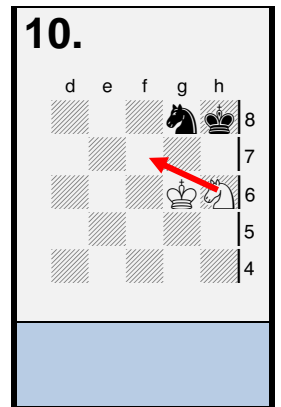
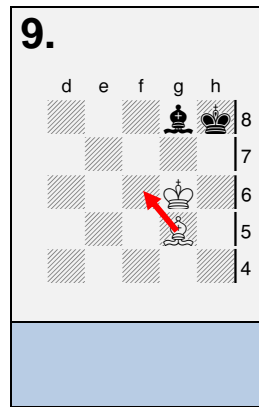
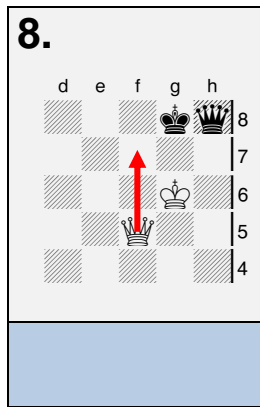
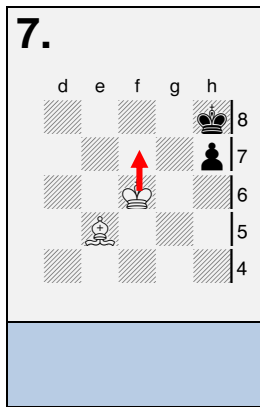
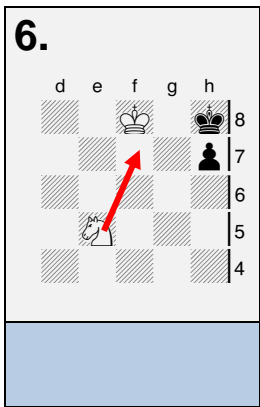
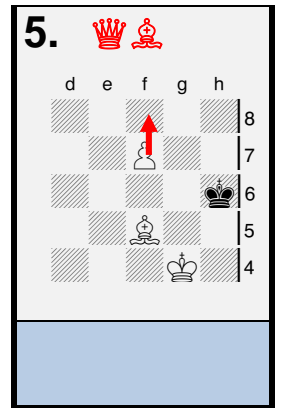
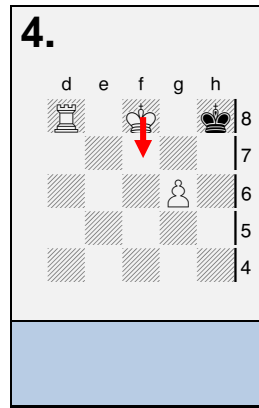
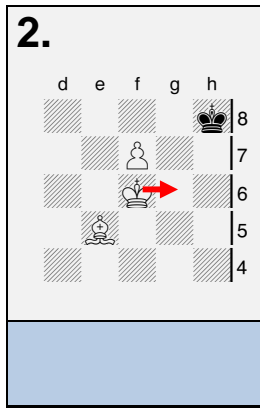
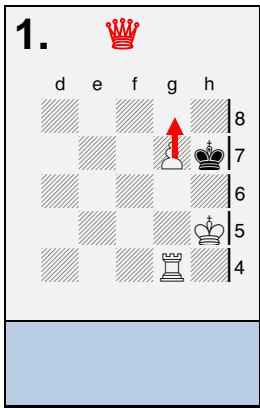
Prima di risolvere i problemi leggete attentamente le spiegazioni sulla prima pagina.

Ogni soluzione sbagliata o incompleta è valutata come un errore.

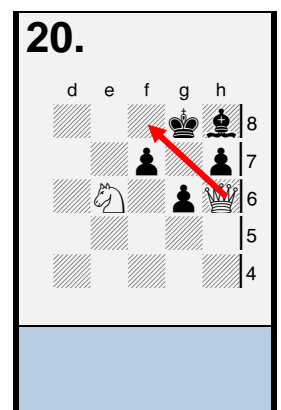
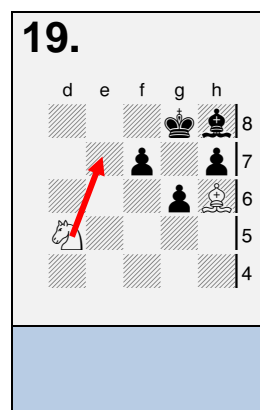
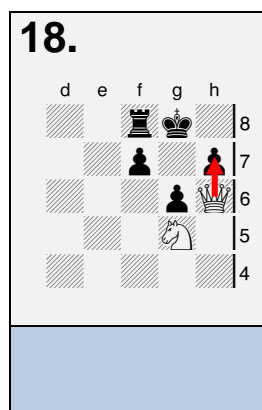
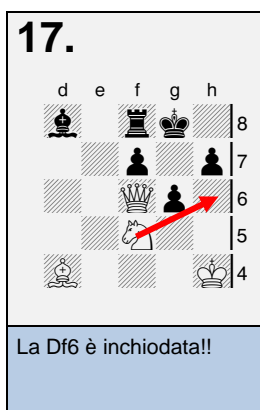
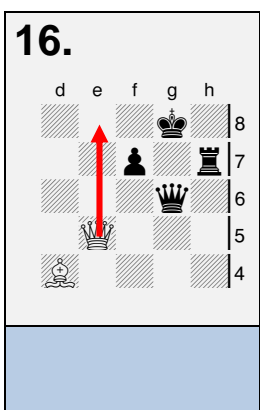
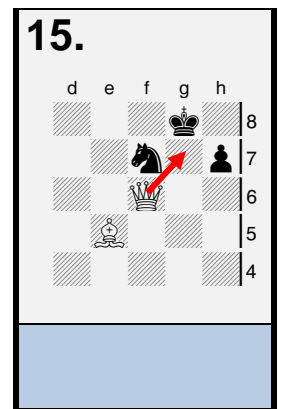
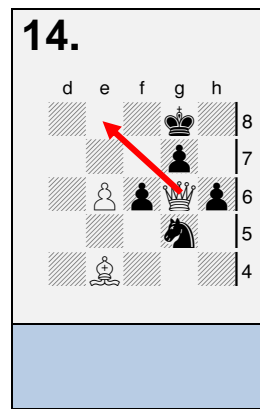
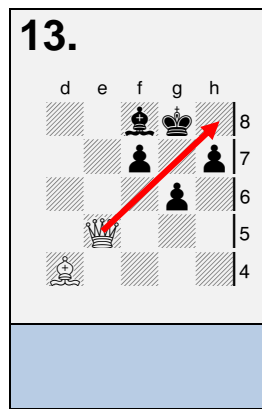
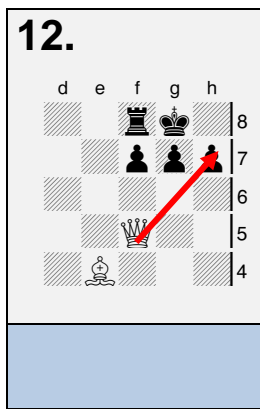
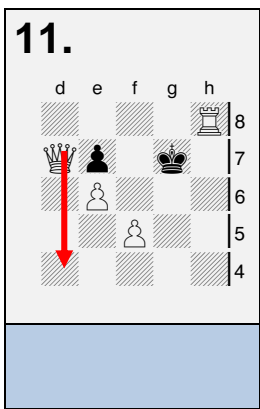
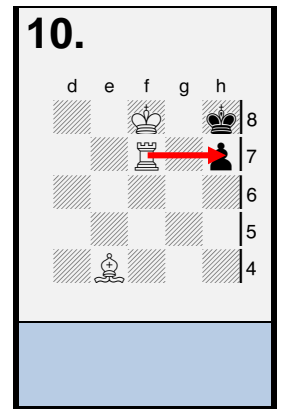
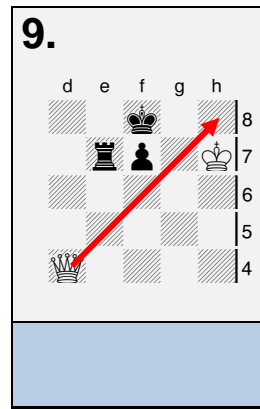
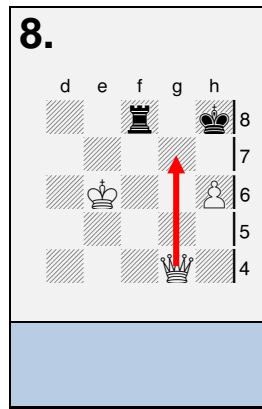
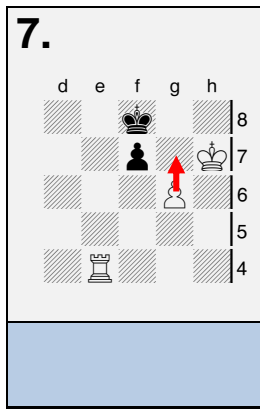
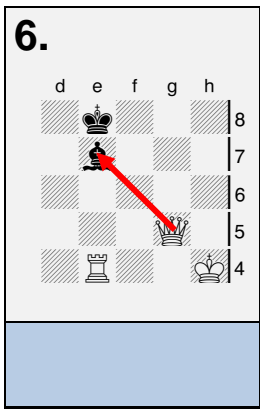
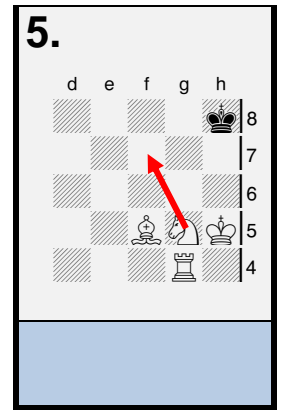
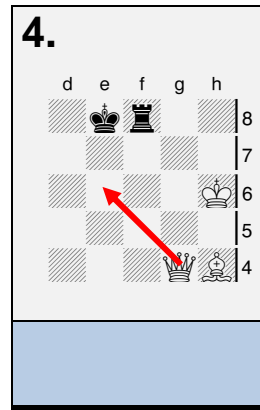
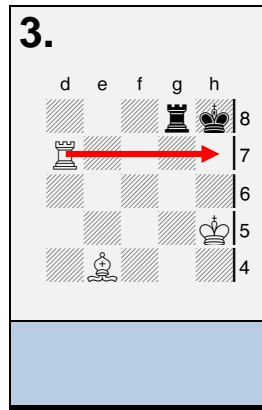
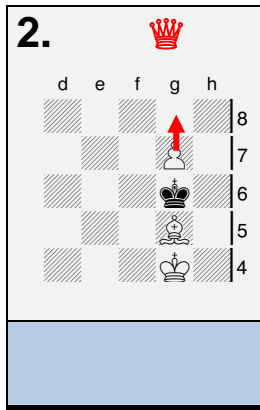
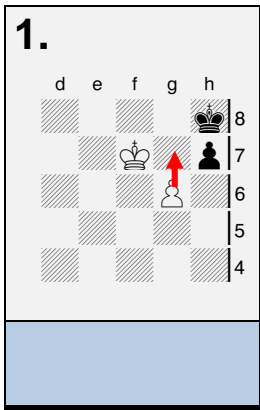


Prima di risolvere i problemi leggete attentamente le spiegazioni sulla prima pagina.

Ogni soluzione sbagliata o incompleta è valutata come un errore.

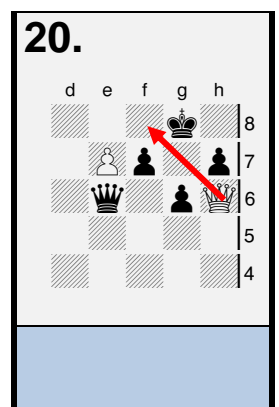
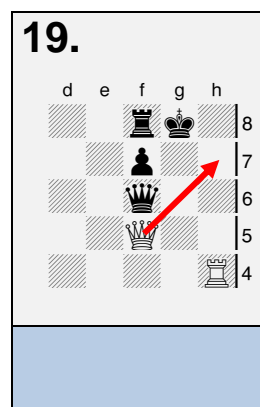
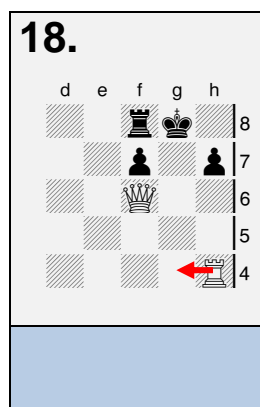
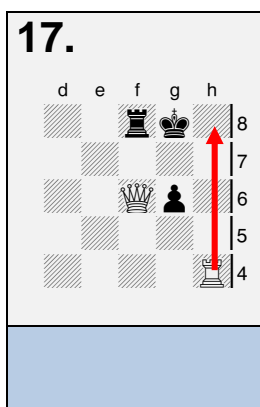
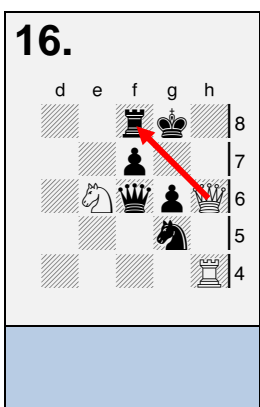
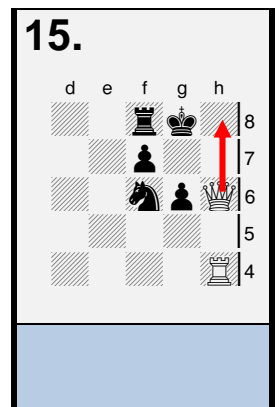
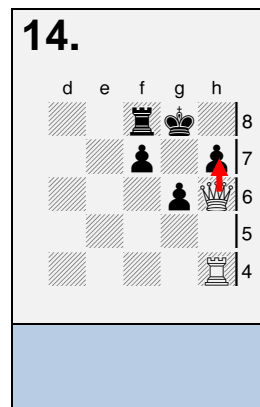
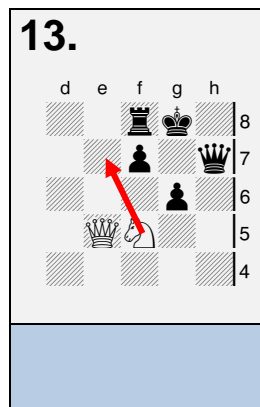
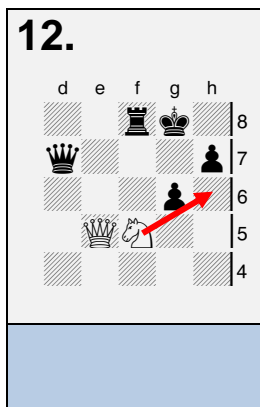
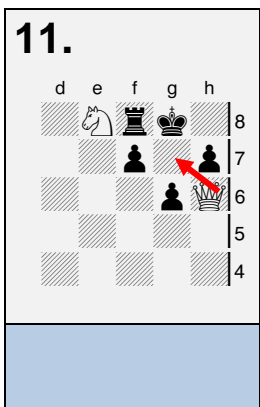
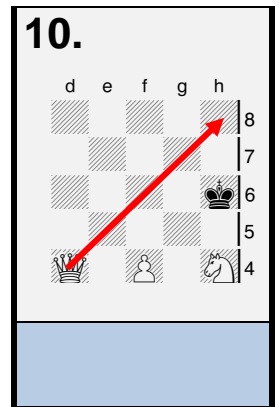
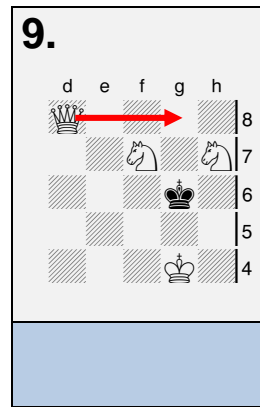
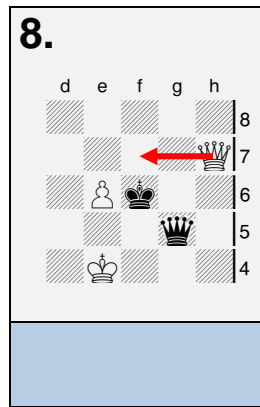
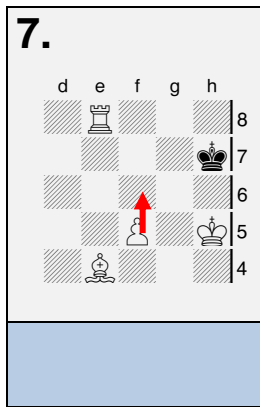
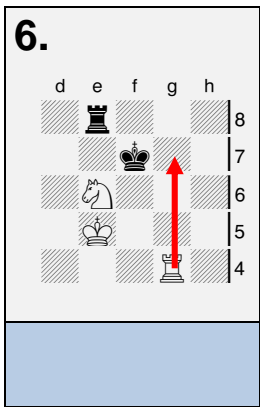
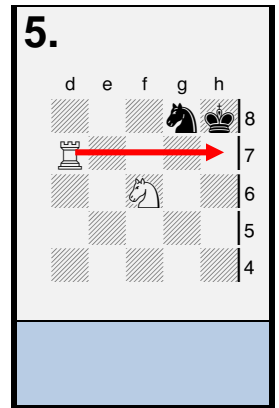
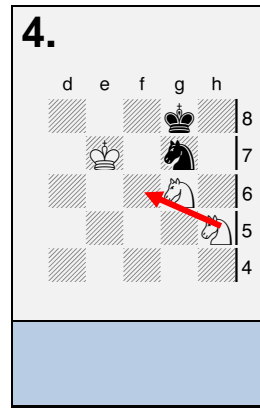
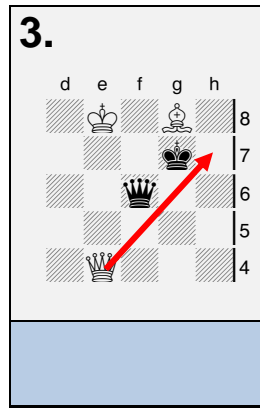
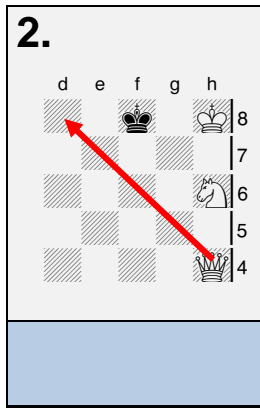
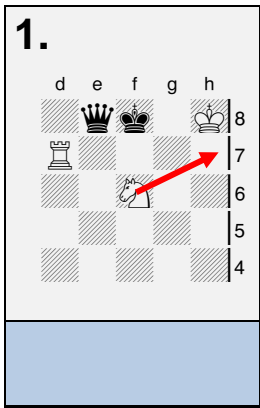


Prima di risolvere i problemi leggete attentamente le spiegazioni sulla prima pagina.
Ogni soluzione sbagliata o incompleta è valutata come un errore.



Prima di risolvere i problemi leggete attentamente le spiegazioni sulla prima pagina.

Ogni soluzione sbagliata o incompleta è valutata come un errore.



Prima di risolvere i problemi leggete attentamente le spiegazioni sulla prima pagina.
Ogni soluzione sbagliata o incompleta è valutata come un errore.

<p>1.</p>	<p>2.</p>	<p>3.</p>	<p>4.</p>	<p>5.</p>
<p>6.</p>	<p>7.</p>	<p>8.</p>	<p>9.</p>	<p>10.</p>
<p>11.</p>	<p>12.</p>	<p>13.</p>	<p>14.</p>	<p>15.</p>
<p>16.</p>	<p>17.</p>	<p>18. ♔ ♖</p>	<p>19.</p>	<p>20.</p>

Prima di risolvere i problemi leggete attentamente le spiegazioni sulla prima pagina.

Ogni diagramma con una soluzione sbagliata o incompleta è valutato come un errore.

1.

	d	e	f	g	h	
8			♠	♔		
7						
6						
5			♙			
4						

♔

2.

	d	e	f	g	h	
8			♙	♔		
7						
6				♙		
5						
4						

♔

3.

	d	e	f	g	h	
8				♠	♔	
7				♙		
6						
5			♙			
4						

♠

4.

	d	e	f	g	h	
8			♔		♔	
7					♙	
6						
5						
4						♠

♙

5.

	d	e	f	g	h	
8						
7						
6					♔	
5				♙		
4						♔

♙

6.

	d	e	f	g	h	
8						
7			♙	♙	♔	
6						
5					♙	
4						

♠

7.

	d	e	f	g	h	
8						♔
7					♙	
6			♙			
5						
4						

♙

8.

	d	e	f	g	h	
8			♙		♔	
7					♙	
6				♙	♙	
5						
4						

♠

9.

	d	e	f	g	h	
8			♠	♔		
7					♙	
6			♙		♙	
5						
4			♙			

♙

10.

	d	e	f	g	h	
8						
7					♔	
6						
5					♔	
4						

♠

11.

	d	e	f	g	h	
8						
7			♙	♙	♔	
6						
5						
4						

♠

12.

	d	e	f	g	h	
8			♙	♔		
7					♙	
6						
5						
4			♙			

♙

13.

	d	e	f	g	h	
8				♔		
7				♙		
6						
5				♠		
4						

♙

14.

	d	e	f	g	h	
8					♔	
7						
6						♔
5						
4						

♔

15.

	d	e	f	g	h	
8				♙		
7					♙	
6						♔
5						
4					♙	

♙

16.

	d	e	f	g	h	
8				♔		
7				♙		
6				♙		
5						
4						

♔

17.

	d	e	f	g	h	
8			♔	♙		
7			♙	♙		
6						
5						
4						

♙

18.

	d	e	f	g	h	
8				♔		
7				♠		
6				♙		
5						
4						

♠

19.

	d	e	f	g	h	
8					♔	
7						♙
6					♠	♙
5						
4						

♔

20.

	d	e	f	g	h	
8						♔
7			♙		♙	♙
6						
5						♠
4						

♙

Prima di risolvere i problemi leggete attentamente le spiegazioni sulla prima pagina.

Ogni diagramma con una soluzione sbagliata o incompleta è valutato come un errore.

1.

d	e	f	g	h	
					8
					7
					6
					5
					4

White king on g7, white rook on d4. Red X marks on f5 and h4.

2.

d	e	f	g	h	
					8
					7
					6
					5
					4

White king on f8, white king on e7, white pawns on e6 and f6. Red X marks on f8 and g7.

3.

d	e	f	g	h	
					8
					7
					6
					5
					4

White king on e8, white rook on f7. Red X marks on f8, g8, and h8.

4.

d	e	f	g	h	
					8
					7
					6
					5
					4

White king on f6, white king on e5. Red X marks on h8 and f6.

5.

d	e	f	g	h	
					8
					7
					6
					5
					4

White king on f8, white king on e7, white rook on d7. Red X marks on g8 and f6.

6.

d	e	f	g	h	
					8
					7
					6
					5
					4

White king on g8, white king on f6. Red X marks on d8, e8, and g7.

7.

d	e	f	g	h	
					8
					7
					6
					5
					4

White king on e7, white king on f5, white king on d4. Red X mark on f6.

8.

d	e	f	g	h	
					8
					7
					6
					5
					4

White king on g8, white king on f7, white king on e6. Red X marks on d8, e8, and g7.

9.

d	e	f	g	h	
					8
					7
					6
					5
					4

White king on g8, white king on f7, white king on e6. Red X mark on d8.

10.

d	e	f	g	h	
					8
					7
					6
					5
					4

White king on h8, white king on f6. Red X mark on g7.

11.

d	e	f	g	h	
					8
					7
					6
					5
					4

White king on e8, white king on d7, white king on f6. Red X marks on g6 and e5.

12.

d	e	f	g	h	
					8
					7
					6
					5
					4

White king on h8, white king on g7, white king on f6. Red X marks on f8 and g7.

13.

d	e	f	g	h	
					8
					7
					6
					5
					4

White king on e8, white king on d7, white king on f6. Red X marks on e7, g7, and f6.

14.

d	e	f	g	h	
					8
					7
					6
					5
					4

White king on f6, white king on g6. Red X mark on e5.

15.

d	e	f	g	h	
					8
					7
					6
					5
					4

White king on h8, white king on g7, white king on f6. Red X mark on h8.

16.

d	e	f	g	h	
					8
					7
					6
					5
					4

White king on f6, white king on e6, white king on d6. Red X marks on d8, e8, h8, e5, and h4.

17.

d	e	f	g	h	
					8
					7
					6
					5
					4

White king on f6, white king on e6, white king on d4. Red X mark on e5.

18.

d	e	f	g	h	
					8
					7
					6
					5
					4

White king on f6, white king on e6, white king on d4. Red X mark on d8.

19.

d	e	f	g	h	
					8
					7
					6
					5
					4

White king on e8, white king on f6. Red X marks on f6 and e5.

20.

d	e	f	g	h	
					8
					7
					6
					5
					4

White king on h8, white king on g7, white king on f6. Red X marks on g8, f7, and e5.

Prima di risolvere i problemi leggete attentamente le spiegazioni sulla prima pagina.

Ogni diagramma con una soluzione sbagliata o incompleta è valutato come un errore.

1.

	d	e	f	g	h	
8			♔			
7					♕	
6	✗					
5					♖	
4						

♖

2.

	d	e	f	g	h	
8	✗		♔		✗	
7			♙			
6						
5			♘			
4						

♖

3.

	d	e	f	g	h	
8						
7		♘	♙	♙	♔	
6						
5					✗	
4					♖	

♔

4.

	d	e	f	g	h	
8	✗	✗		♔		
7				♙		
6			♙	♖	♙	
5						
4						

♖

5.

	d	e	f	g	h	
8				♖	♔	
7			✗	♙	♙	
6						
5						
4						

♘

6.

	d	e	f	g	h	
8		♖	♖	♔	♖	
7			✗			
6	♘			✗		
5						
4						

♔

7.

	d	e	f	g	h	
8	✗	✗	✗	✗		♔
7						♙
6						♖
5						
4						

♖

8.

	d	e	f	g	h	
8			♘		✗	
7			✗	♙		
6					♔	
5			✗			
4				✗	♔	

♘

9.

	d	e	f	g	h	
8				♔		
7			✗	♖	✗	
6	✗			♔	✗	
5						
4						

♖

10.

	d	e	f	g	h	
8						♔
7				♔		✗
6			✗	✗		
5		✗		♘		
4	♖					

♖

11.

	d	e	f	g	h	
8				♔		
7		✗	♖	✗		
6				♔		
5						
4						

♖

12.

	d	e	f	g	h	
8				♔		✗
7				✗		
6			♔	♘		
5						
4						

♖

13.

	d	e	f	g	h	
8						
7			♔	✗	♙	
6			✗		♔	
5					✗	
4			✗		♖	

♔

14.

	d	e	f	g	h	
8				♔	♖	
7						
6			♖	✗	♔	
5						
4						

♘

15.

	d	e	f	g	h	
8				♔	✗	✗
7			♙	✗		
6					♘	
5						
4						

♔

16.

	d	e	f	g	h	
8						
7						
6		♔	♖	✗	♔	
5			♖			
4					✗	

♔

17.

	d	e	f	g	h	
8				♔	♖	
7					♙	
6			♖	✗		♔
5	✗					
4						

♖

18.

	d	e	f	g	h	
8			♘		✗	
7					✗	
6			♘		♔	
5						
4					✗	

♖

19.

	d	e	f	g	h	
8			♘		✗	
7					✗	
6				✗	♔	
5						
4					♖	

♔

20.

	d	e	f	g	h	
8	✗	✗	✗	✗	✗	♔
7						✗
6				♔		✗
5						✗
4						✗

♖

Prima di risolvere i problemi leggete attentamente le spiegazioni sulla prima pagina.
Ogni diagramma con una soluzione sbagliata o incompleta è valutato come un errore.

1.

2.

3.

4.

5.

6.

7.

8.

9.

10.

11.

12.

13.

14.

15.

16.

17.

18.

19.

20.

Prima di risolvere i problemi leggete attentamente le spiegazioni sulla prima pagina.

Ogni diagramma con una soluzione sbagliata o incompleta è valutato come un errore.

1.

2.

3.

4.

5.

6.

7.

8.

9.

Prima di risolvere i problemi leggete attentamente le spiegazioni sulla prima pagina.
Ogni diagramma con una soluzione sbagliata o incompleta è valutato come un errore.

1.

Chessboard diagram 1: White king on g8, black king on h8, black rook on d4. A red arrow points from d4 to h4. A hand icon points to the board.

2.

Chessboard diagram 2: White king on g8, black king on h8, black rook on d8, black knight on f6. A red arrow points from f6 to g7. A hand icon points to the board.

3.

Chessboard diagram 3: White king on a8, black king on b8, black knight on f6, black rook on b6. A red arrow points from b6 to b7. A hand icon points to the board.

4.

Chessboard diagram 4: White king on a8, black king on b8, black knight on c6. A red arrow points from c6 to b7. A hand icon points to the board.

5.

Chessboard diagram 5: White king on a8, black king on h8, black knight on c6, black rook on e6. A red arrow points from e6 to f7. A hand icon points to the board.

6.

Chessboard diagram 6: White king on a8, black king on h8, black knight on d5, black rook on b5. A red arrow points from b5 to d2. A hand icon points to the board.

7.

Chessboard diagram 7: White king on g8, black king on h8, black knight on f7, black rook on d4. A red arrow points from d4 to g6. A hand icon points to the board.

8.

Chessboard diagram 8: White king on a8, black king on h8, black knight on a5, black rook on c6. A red arrow points from a5 to c6. A hand icon points to the board.

9.

Chessboard diagram 9: White king on a8, black king on h8, black knight on f7, black rook on d8, black rook on f3. A red arrow points from f3 to f7. A hand icon points to the board.

Prima di risolvere i problemi leggete attentamente le spiegazioni sulla prima pagina.
Ogni diagramma con una soluzione sbagliata o incompleta è valutato come un errore.

1.

Chessboard diagram 1: A chessboard with a red arrow pointing from the white king on g8 to the white knight on h5. A hand icon points to the board.

2.

Chessboard diagram 2: A chessboard with a red arrow pointing from the white king on e8 to the white knight on c3. A hand icon points to the board.

3.

Chessboard diagram 3: A chessboard with a red arrow pointing from the white king on g8 to the white knight on d4. A hand icon points to the board.

4.

Chessboard diagram 4: A chessboard with a red arrow pointing from the white king on g8 to the white knight on b2. A hand icon points to the board.

5.

Chessboard diagram 5: A chessboard with a red arrow pointing from the white king on e8 to the white knight on d4. A hand icon points to the board.

6.

Chessboard diagram 6: A chessboard with a red arrow pointing from the white king on g8 to the white knight on b5. A hand icon points to the board.

7.

Chessboard diagram 7: A chessboard with a red arrow pointing from the white king on e8 to the white knight on c7. A hand icon points to the board.

8.

Chessboard diagram 8: A chessboard with a red arrow pointing from the white king on e8 to the white knight on c7. A hand icon points to the board.

9.

Chessboard diagram 9: A chessboard with a red arrow pointing from the white king on g8 to the white knight on d5. A hand icon points to the board.

Prima di risolvere i problemi leggete attentamente le spiegazioni sulla prima pagina.
Ogni diagramma con una soluzione sbagliata o incompleta è valutato come un errore.

1.

2.

3.

4.

5.

6.

7.

8.

9.

Prima di risolvere i problemi leggete attentamente le spiegazioni sulla prima pagina.

Ogni diagramma con una soluzione sbagliata o incompleta è valutato come un errore.

1.

2.

3.

4.

5.

6.

7.

8.

9.

Prima di risolvere i problemi leggete attentamente le spiegazioni sulla prima pagina.
Ogni diagramma con una soluzione sbagliata o incompleta è valutato come un errore.

1.

2.

3.

4.

5.

6.

7.

8.

9.

Prima di risolvere i problemi leggete attentamente le spiegazioni sulla prima pagina.

Ogni diagramma con una soluzione sbagliata o incompleta è valutato come un errore.

1.

Chessboard diagram 1: A chessboard with a hand icon on the left pointing to the board. A red arrow points from the black king on e8 to the black knight on d7.

2.

Chessboard diagram 2: A chessboard with a hand icon on the left pointing to the board. A red arrow points from the black rook on b2 to the black king on g7.

3.

Chessboard diagram 3: A chessboard with a hand icon on the left pointing to the board. A red arrow points from the black queen on f6 to the black knight on f1.

4.

Chessboard diagram 4: A chessboard with a hand icon on the left pointing to the board. A red arrow points from the black king on f6 to the black knight on e5.

5.

Chessboard diagram 5: A chessboard with a hand icon on the left pointing to the board. A red arrow points from the black queen on a6 to the black king on d7.

6.

Chessboard diagram 6: A chessboard with a hand icon on the left pointing to the board. A red arrow points from the black rook on b2 to the black king on f6.

7.

Chessboard diagram 7: A chessboard with a hand icon on the left pointing to the board. A red arrow points from the black king on e8 to the black knight on d6.

8.

Chessboard diagram 8: A chessboard with a hand icon on the left pointing to the board. A red arrow points from the black queen on d2 to the black knight on d7.

9.

Chessboard diagram 9: A chessboard with a hand icon on the left pointing to the board. A red arrow points from the black queen on f2 to the black knight on f7.

Prima di risolvere i problemi leggete attentamente le spiegazioni sulla prima pagina.
Ogni diagramma con una soluzione sbagliata o incompleta è valutato come un errore.

1.

2.

3.

4.

5.

6.

7.

8.

9.

Prima di risolvere i problemi leggete attentamente le spiegazioni sulla prima pagina.
Ogni diagramma con una soluzione sbagliata o incompleta è valutato come un errore.