

L'obiettivo degli esercizi contenuti nelle schede A, B e C è:

- di esercitarsi a trovare le mosse che riducono lo spazio di manovra dell'avversario;
- di allenare l'occhio a trovare il matto di Regina.

Spiegazioni dei problemi contenuti nelle schede A, B e C:

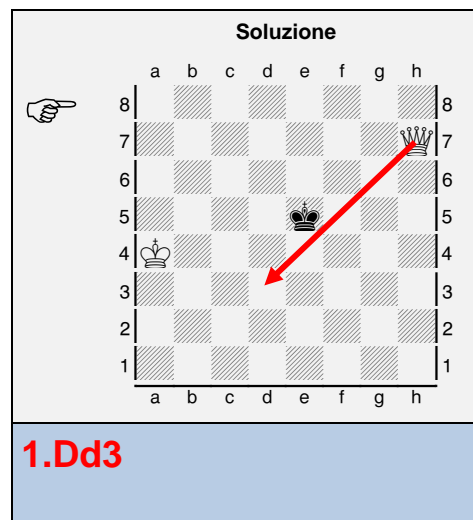
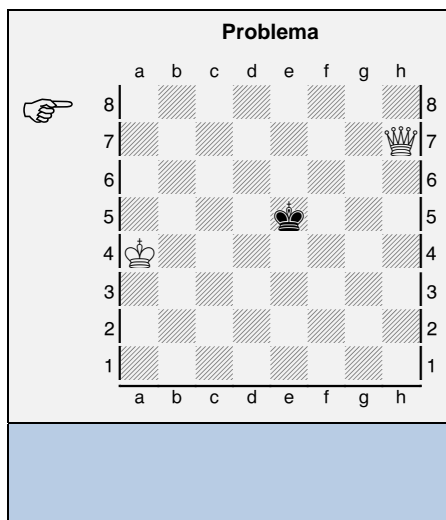
Schede A

Nei problemi delle schede A dovete:

- **trovare e indicare con una freccia la mossa di Regina che riduce maggiormente lo spazio di manovra del Re avversario.**

Nell'esempio a lato con la mossa 1.Dd3! la Regina bianca riduce il rettangolo di manovra del Re nero a sole 20 caselle (e4-h8-e8).

Peggio è invece 1.Dd7? perché il rettangolo di manovra risulta composto da 24 caselle (e6-h6-h1-e1).



Schede B

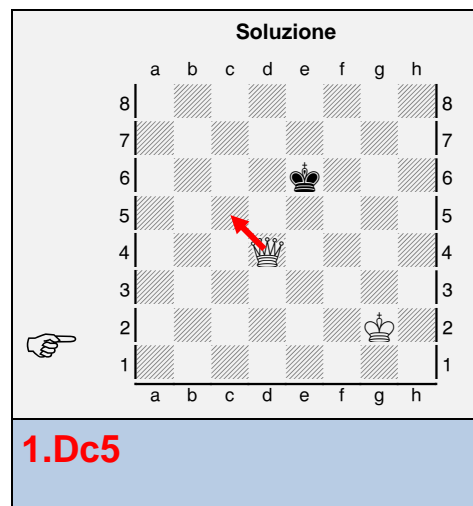
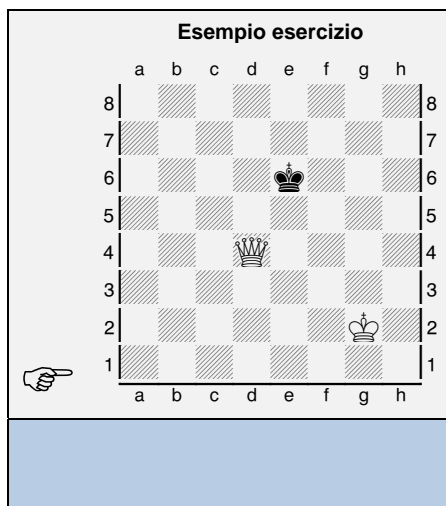
Nei problemi delle schede B dovete:

- **trovare e indicare con una freccia la mossa di Regina che riduce ulteriormente lo spazio di manovra del Re avversario.**

Nell'esempio a lato il Re nero ha un rettangolo di manovra di **16 caselle** (e5-h5-h8-e8).

Giocando correttamente **1.Dc5!** il rettangolo di manovra del Re nero si riduce a **15 caselle** (d6-h6-h8-d8).

Muovendo invece 1.Df4? il rettangolo di manovra del Re nero si allarga a 20 caselle.



Schede C

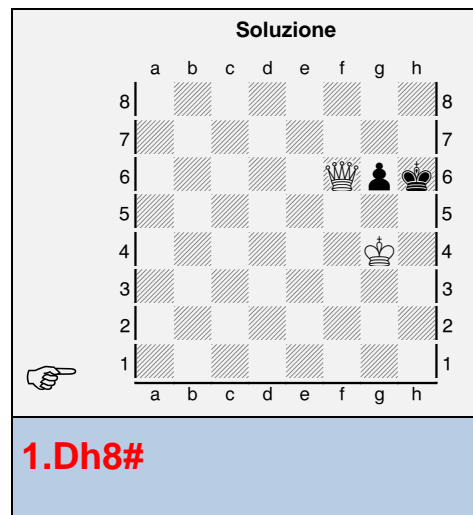
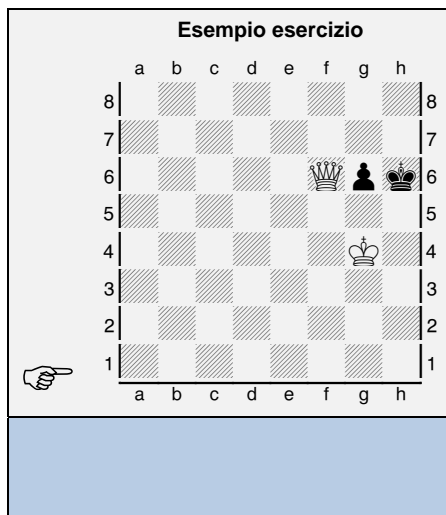
Nei problemi delle schede C dovete:

- **Trovare e indicare con una freccia la mossa della Regina bianca che da matto.**

Nell'esempio a lato la Regina da matto in una mossa unicamente con **1.Dh8#!**.

Sbagliate sono invece:

- 1.Dh4+?? perché il Re può fuggire in g7.
- 1.Df8+?? perché il Re può fuggire in h7.
- 1.Dg5+?? perché il Re può fuggire in g7.
- 1.Df5+?? perché il Re può fuggire in g7.
- 1.Dg7+?? perché il Re può catturare la Donna.



Prima di risolvere i problemi leggete attentamente le spiegazioni sulla prima pagina.

Ogni diagramma con una soluzione sbagliata o incompleta è valutato come un errore.

1.

Chessboard diagram 1: White king on c3, Black king on e5, White queen on c2. A hand icon points to the white king on c3.

2.

Chessboard diagram 2: White king on b3, Black king on f6, White queen on h1. A hand icon points to the white king on b3.

3.

Chessboard diagram 3: White king on c4, Black king on f5, White queen on h2. A hand icon points to the white king on c4.

4.

Chessboard diagram 4: White king on b5, Black king on f2, White queen on h7. A hand icon points to the white king on b5.

5.

Chessboard diagram 5: White king on c6, Black king on f3, White queen on a1. A hand icon points to the white king on c6.

6.

Chessboard diagram 6: White king on e2, Black king on f7, White queen on a5. A hand icon points to the white king on e2.

7.

Chessboard diagram 7: White king on c5, Black king on b3, White queen on f2. A hand icon points to the white king on c5.

8.

Chessboard diagram 8: White king on d7, Black king on f2, White queen on h8. A hand icon points to the white king on d7.

9.

Chessboard diagram 9: White king on e4, Black king on a2, White queen on g1. A hand icon points to the white king on e4.

Prima di risolvere i problemi leggete attentamente le spiegazioni sulla prima pagina.

Ogni diagramma con una soluzione sbagliata o incompleta è valutato come un errore.

1.

Chessboard diagram 1: White king on f6, White queen on d4, White king on e2. A hand icon points to the board.

2.

Chessboard diagram 2: White king on b8, White king on d5, White king on g1. A hand icon points to the board.

3.

Chessboard diagram 3: White king on c6, White king on e5, White king on b4. A hand icon points to the board.

4.

Chessboard diagram 4: White king on e8, White king on c4, White king on g4. A hand icon points to the board.

5.

Chessboard diagram 5: White king on b3, White king on f6, White king on f2. A hand icon points to the board.

6.

Chessboard diagram 6: White king on c8, White king on d6, White king on g2. A hand icon points to the board.

7.

Chessboard diagram 7: White king on a6, White king on d4, White king on d2. A hand icon points to the board.

8.

Chessboard diagram 8: White king on a6, White king on e5, White king on c3. A hand icon points to the board.

9.

Chessboard diagram 9: White king on a6, White king on e5, White king on c3. A hand icon points to the board.

Prima di risolvere i problemi leggete attentamente le spiegazioni sulla prima pagina.

Ogni diagramma con una soluzione sbagliata o incompleta è valutato come un errore.

1.

2.

3.

4.

5.

6.

7.

8.

9.

Prima di risolvere i problemi leggete attentamente le spiegazioni sulla prima pagina.

Ogni diagramma con una soluzione sbagliata o incompleta è valutato come un errore.

1.

Chessboard diagram 1: A chessboard with a black king on d4, a white king on c5, and a white king on h5. A hand icon points to the board.

2.

Chessboard diagram 2: A chessboard with a black king on f6, a white king on d4, and a white king on b3. A hand icon points to the board.

3.

Chessboard diagram 3: A chessboard with a black king on c7, a white king on d4, and a white king on g3. A hand icon points to the board.

4.

Chessboard diagram 4: A chessboard with a white king on b7, a black king on d4, and a white king on e5. A hand icon points to the board.

5.

Chessboard diagram 5: A chessboard with a white king on c2, a black king on g3, and a white king on e5. A hand icon points to the board.

6.

Chessboard diagram 6: A chessboard with a white king on c2, a black king on e7, and a white king on g1. A hand icon points to the board.

7.

Chessboard diagram 7: A chessboard with a black king on d6, a white king on e2, and a white king on h7. A hand icon points to the board.

8.

Chessboard diagram 8: A chessboard with a white king on b3, a black king on g3, and a white king on f1. A hand icon points to the board.

9.

Chessboard diagram 9: A chessboard with a white king on a3, a black king on d5, and a white king on g3. A hand icon points to the board.

Prima di risolvere i problemi leggete attentamente le spiegazioni sulla prima pagina.

Ogni diagramma con una soluzione sbagliata o incompleta è valutato come un errore.

1.

Chessboard diagram 1: White king on c6, White queen on d4, White king on g2. A hand icon points to the board.

2.

Chessboard diagram 2: White king on b4, White queen on e3, White king on g4. A hand icon points to the board.

3.

Chessboard diagram 3: White king on b7, White queen on f5, White king on b4. A hand icon points to the board.

4.

Chessboard diagram 4: White king on e7, White queen on c5, White king on g2. A hand icon points to the board.

5.

Chessboard diagram 5: White king on a8, White queen on c5, White king on e3. A hand icon points to the board.

6.

Chessboard diagram 6: White king on a4, White queen on c5, White king on f4. A hand icon points to the board.

7.

Chessboard diagram 7: White king on f6, White queen on d4, White king on c2. A hand icon points to the board.

8.

Chessboard diagram 8: White king on c3, White queen on e5, White king on h4. A hand icon points to the board.

9.

Chessboard diagram 9: White king on c4, White queen on e5, White king on g3. A hand icon points to the board.

Prima di risolvere i problemi leggete attentamente le spiegazioni sulla prima pagina.

Ogni diagramma con una soluzione sbagliata o incompleta è valutato come un errore.

1.

Chessboard diagram 1: White king on c4, White queen on e3, White rook on h3. A hand icon points to the board.

2.

Chessboard diagram 2: White king on b6, White queen on e5, White rook on d3. A hand icon points to the board.

3.

Chessboard diagram 3: White king on g2, White queen on d4, White rook on b4. A hand icon points to the board.

4.

Chessboard diagram 4: White king on c6, White queen on e5, White rook on b2. A hand icon points to the board.

5.

Chessboard diagram 5: White king on a4, White queen on c3, White rook on g3. A hand icon points to the board.

6.

Chessboard diagram 6: White king on d7, White queen on e5, White rook on g3. A hand icon points to the board.

7.

Chessboard diagram 7: White king on h8, White queen on e6, White rook on c2. A hand icon points to the board.

8.

Chessboard diagram 8: White king on e6, White queen on c2, White rook on f3. A hand icon points to the board.

9.

Chessboard diagram 9: White king on b4, White queen on d5, White rook on g2. A hand icon points to the board.

Prima di risolvere i problemi leggete attentamente le spiegazioni sulla prima pagina.

Ogni diagramma con una soluzione sbagliata o incompleta è valutato come un errore.

1.

Chessboard diagram 1: White King on d6, White Queen on b5, White Bishop on c2. Black King on d6.

2.

Chessboard diagram 2: White King on c3, White Queen on e5, White Bishop on g4. Black King on g4.

3.

Chessboard diagram 3: White King on d3, White Queen on f6, White Bishop on g4. Black King on f6.

4.

Chessboard diagram 4: White King on c3, White Queen on d4, White Bishop on g2. Black King on c3.

5.

Chessboard diagram 5: White King on a1, White Queen on d3, White Bishop on f2. Black King on a1.

6.

Chessboard diagram 6: White King on b5, White Queen on c5, White Bishop on f4. Black King on f4.

7.

Chessboard diagram 7: White King on d6, White Queen on c4, White Bishop on h2. Black King on d6.

8.

Chessboard diagram 8: White King on a7, White Queen on c6, White Bishop on d3. Black King on a7.

9.

Chessboard diagram 9: White King on c2, White Queen on d4, White Bishop on f3. Black King on c2.

Prima di risolvere i problemi leggete attentamente le spiegazioni sulla prima pagina.

Ogni diagramma con una soluzione sbagliata o incompleta è valutato come un errore.

1.

Chessboard diagram 1: White king on f7, White queen on d6, White king on c2. A hand icon points to the board.

2.

Chessboard diagram 2: White king on c7, White queen on d5, White king on h4. A hand icon points to the board.

3.

Chessboard diagram 3: White king on d5, White queen on h4, White king on h1. A hand icon points to the board.

4.

Chessboard diagram 4: White king on b5, White queen on d4, White king on e5. A hand icon points to the board.

5.

Chessboard diagram 5: White king on f4, White queen on c2, White king on a1. A hand icon points to the board.

6.

Chessboard diagram 6: White king on b6, White queen on e5, White king on c3. A hand icon points to the board.

7.

Chessboard diagram 7: White king on b5, White queen on d4, White king on e5. A hand icon points to the board.

8.

Chessboard diagram 8: White king on a6, White queen on f5, White king on c3. A hand icon points to the board.

9.

Chessboard diagram 9: White king on a8, White queen on b5, White king on c5. A hand icon points to the board.

Prima di risolvere i problemi leggete attentamente le spiegazioni sulla prima pagina.

Ogni diagramma con una soluzione sbagliata o incompleta è valutato come un errore.

1.

Chessboard diagram 1: White king on d5, White queen on e5, Black king on h4. A hand icon points to the board.

2.

Chessboard diagram 2: White king on c3, White queen on d3, Black king on c1, Black pawn on b2. A hand icon points to the board.

3.

Chessboard diagram 3: White king on d4, White queen on e6, Black king on d8. A hand icon points to the board.

4.

Chessboard diagram 4: White king on b7, White queen on d4, White pawn on a4, Black king on a6. A hand icon points to the board.

5.

Chessboard diagram 5: White king on c3, White queen on h2, Black king on a1. A hand icon points to the board.

6.

Chessboard diagram 6: White king on f7, White queen on h3, Black king on e5, Black pawn on d4. A hand icon points to the board.

7.

Chessboard diagram 7: White king on d7, White queen on c6, Black king on a5. A hand icon points to the board.

8.

Chessboard diagram 8: White king on d5, White queen on b6, Black king on a8, Black pawn on b7. A hand icon points to the board.

9.

Chessboard diagram 9: White king on e8, White queen on f6, Black king on b4. A hand icon points to the board.

Prima di risolvere i problemi leggete attentamente le spiegazioni sulla prima pagina.

Ogni diagramma con una soluzione sbagliata o incompleta è valutato come un errore.

1.

Chessboard diagram 1: White king on f8, White queen on e5, Black king on d7, Black pawn on f7. A hand icon points to the board.

2.

Chessboard diagram 2: White king on e1, White queen on c5, Black king on e8, Black pawn on d3. A hand icon points to the board.

3.

Chessboard diagram 3: White king on b2, White queen on b7, Black king on a4, Black pawn on c5. A hand icon points to the board.

4.

Chessboard diagram 4: White king on c5, White queen on a6, Black king on a6, Black pawn on b6. A hand icon points to the board.

5.

Chessboard diagram 5: White king on c6, White queen on c6, Black king on c7, Black pawn on b6. A hand icon points to the board.

6.

Chessboard diagram 6: White king on c5, White queen on h1, Black king on a6, Black pawn on a6. A hand icon points to the board.

7.

Chessboard diagram 7: White king on g5, White queen on g3, Black king on g5, Black pawn on g6, Black pawn on g4. A hand icon points to the board.

8.

Chessboard diagram 8: White king on c4, White queen on b7, Black king on a3, Black pawn on a3. A hand icon points to the board.

9.

Chessboard diagram 9: White king on b2, White queen on c2, Black king on a5, Black pawn on a5, Black pawn on a6. A hand icon points to the board.

Prima di risolvere i problemi leggete attentamente le spiegazioni sulla prima pagina.

Ogni diagramma con una soluzione sbagliata o incompleta è valutato come un errore.

1.

Diagram 1: Chessboard with White King on g3, White Queen on h3, and Black King on g1. The rest of the board is empty.

2.

Diagram 2: Chessboard with White King on d3, White Queen on d5, White Pawn on d7, Black Pawn on d7, and Black King on c8. The rest of the board is empty.

3.

Diagram 3: Chessboard with White King on e5, White Queen on f5, White Pawn on d4, and Black King on h6. The rest of the board is empty.

4.

Diagram 4: Chessboard with White King on f5, White Pawn on e2, White Pawn on g2, White Pawn on h2, Black King on g2, and Black Pawn on g2. The rest of the board is empty.

5.

Diagram 5: Chessboard with White King on d3, White Queen on f7, White Pawn on d1, and Black King on d1. The rest of the board is empty.

6.

Diagram 6: Chessboard with White King on c7, White Queen on d4, White Pawn on b4, White Pawn on c3, Black King on b4, and Black Pawn on b4. The rest of the board is empty.

7.

Diagram 7: Chessboard with White King on b8, White Queen on a6, White Queen on a5, and Black King on a6. The rest of the board is empty.

8.

Diagram 8: Chessboard with White King on f8, White Queen on f7, White Pawn on f7, Black King on f7, White King on d4, and White Queen on h4. The rest of the board is empty.

9.

Diagram 9: Chessboard with White King on e1, White Queen on h6, and White King on f3. The rest of the board is empty.

Prima di risolvere i problemi leggete attentamente le spiegazioni sulla prima pagina.

Ogni diagramma con una soluzione sbagliata o incompleta è valutato come un errore.

1.

Chessboard diagram 1: White king on c8, White queen on d7, White queen on e5, Black king on c7, Black king on b6, Black queen on d7. A hand icon points to the board.

2.

Chessboard diagram 2: White king on a3, White queen on c2, White queen on f7. A hand icon points to the board.

3.

Chessboard diagram 3: White king on d6, White queen on e4, White queen on d4, Black king on c7, Black king on c8. A hand icon points to the board.

4.

Chessboard diagram 4: White king on g8, White queen on f6, White queen on h4, Black king on g8. A hand icon points to the board.

5.

Chessboard diagram 5: White king on e4, White queen on e5, White queen on f5, Black king on g6, Black king on g6, Black queen on f6, Black queen on f5. A hand icon points to the board.

6.

Chessboard diagram 6: White king on a4, White queen on c5, White queen on e1, Black king on a4. A hand icon points to the board.

7.

Chessboard diagram 7: White king on c5, White queen on d5, White queen on c4, White king on c4, White king on b4, White king on a4, Black king on c6, Black king on b6. A hand icon points to the board.

8.

Chessboard diagram 8: White king on c6, White queen on f5, White queen on g5, Black king on g5. A hand icon points to the board.

9.

Chessboard diagram 9: White king on e2, White queen on h6, White queen on h4, White king on h4, White king on h3, Black king on h6, Black king on h4, Black king on h3. A hand icon points to the board.